

**Budget Presentation
FY26-27**

**CHRISTINA CRAIN
Executive Director
(203)977-5238
ccrain@stamfordct.gov**





Platinum
Transparency
2026

Candid.

Mission Statement- *To enrich and empower seniors from all backgrounds to thrive - physically, emotionally and socially.*

Our Vision- *An inclusive community where older adults are valued, respected and inspired to live life to the fullest.*

**Designated as a
Community Focal Point by
The Southwestern CT Agency on Aging**



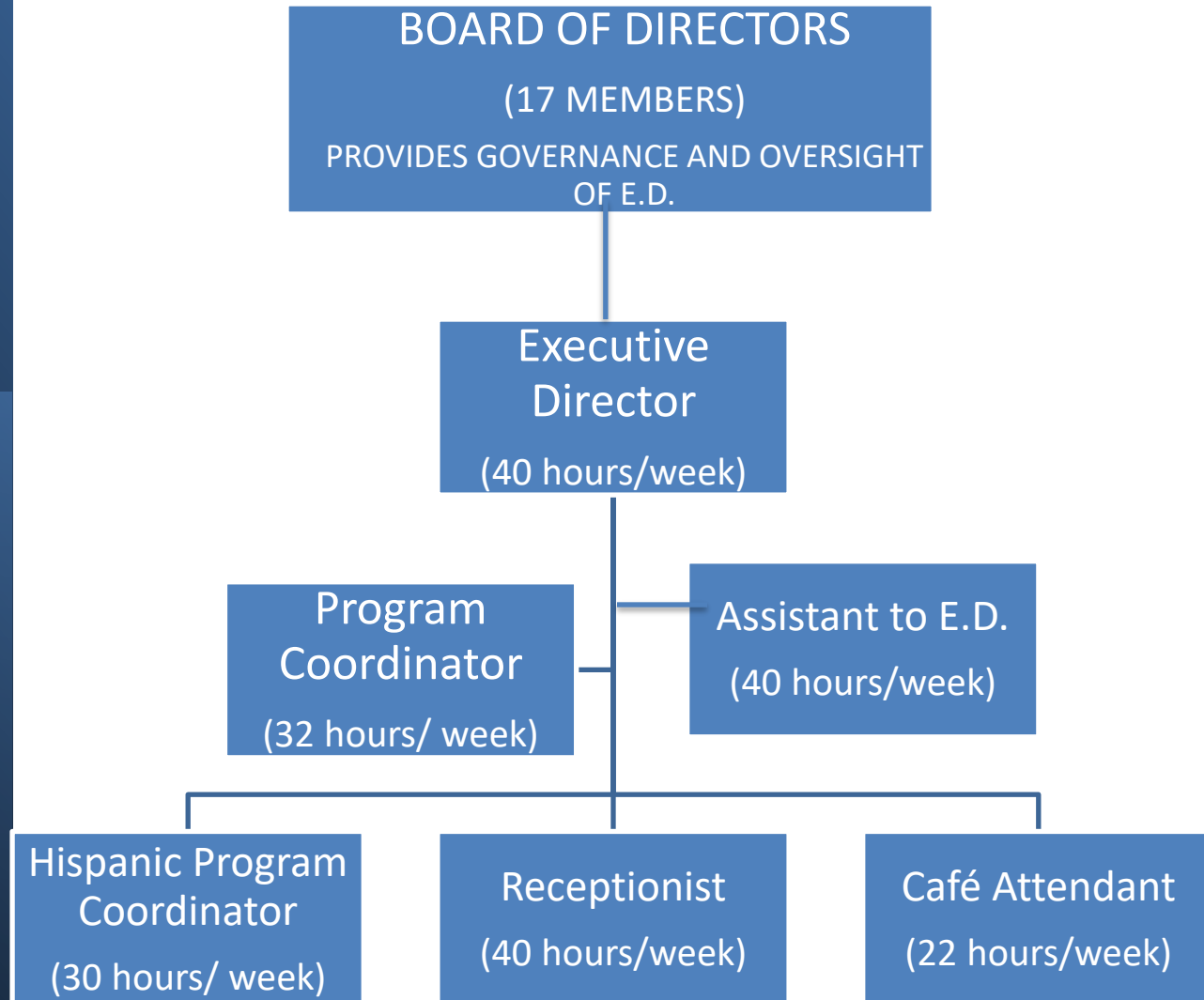
Programs & Services

- 20 Weekly Fitness classes for all ability levels
- Art Classes
- Enrichment Programs
- Language Classes
- Lifelong Learning
- Health & Wellness
- Hispanic Club
- Subsidized Daily Lunch
- Special Events
- Benefits Counseling
- Information & Assistance on Aging Related Issues
- Multi-Cultural trips





ORGANIZATIONAL CHART





Budget Summary (FY 2026-27)

- Mayor Simmon's FY26/27 budget proposal includes \$328,640 in grant funding to the Stamford Senior Center.
- This reflects a 4% increase over FY25/26 grant of \$316,000
- The increase helps offset a 13% rise in staff health insurance premiums and supports a modest cost-of-living increase for staff.

New or Expanded Services/Programs (FY 2026-27)

- **Expanded fitness classes:**
 - Added a second afternoon yoga class
 - Introduced Strong Bones classes twice weekly for individuals with osteoporosis and osteopenia
 - Added Fitness with Edwin twice weekly, focusing on strength, balance and coordination.
- **Lifelong Learning:**
 - Expanded Language Classes
 - Added new Music and History Classes
- **Other Enhancements:**
 - Participated in Farmers' Market Senior Voucher Program, enrolling low -income seniors and providing them with \$40 vouchers for fresh fruits and vegetables.
- **We do not plan to discontinue any services – demand is rising, not shrinking.**



Key Challenges & Changes (FY 2026-27)

- FY 25/26 saw a **21%** increase in membership and a **22%** rise in daily attendance at the Center.
- Membership grew from 944 members in FY24/25 to **1,149** members in FY 25/26.
- Since July of 2025, we have had **194** new members join the Center.
- Despite double digit growth, staffing levels have remained largely unchanged. The only increase was expanding the Program Coordinator role from 24 to 32 hours in October of 2025.
- **Physical space is now the primary barrier to meeting community need. We are out of room and our seniors feel it. Without additional investment, growth will outpace capacity.**

Performance Improvements & Efficiencies:

Expanded Service Capacity Without Increasing Staffing.

- Serving an average of 202 seniors each day
- Higher participation across fitness, education, social programs
- Maintained high quality service delivery despite rising demand on existing staff
- **Cross-trained, multi-roll staff model**
 - Staff set up, break down and manage real time issues
- **Expanded access with limited resources**
 - Delivering more services with the same resources
 - Stretching every dollar to maximize community benefit

In Closing, The Stamford Senior Center is....

Serving	More older adults than ever before
Providing	Programs and services that promote health, reduce isolation and strengthen community.
Stretching	Every dollar through lean staffing and innovative programming
Facing	Rapid growth and urgent space constraints that require investment.



Your support ensures Stamford's older adults continue to thrive!