

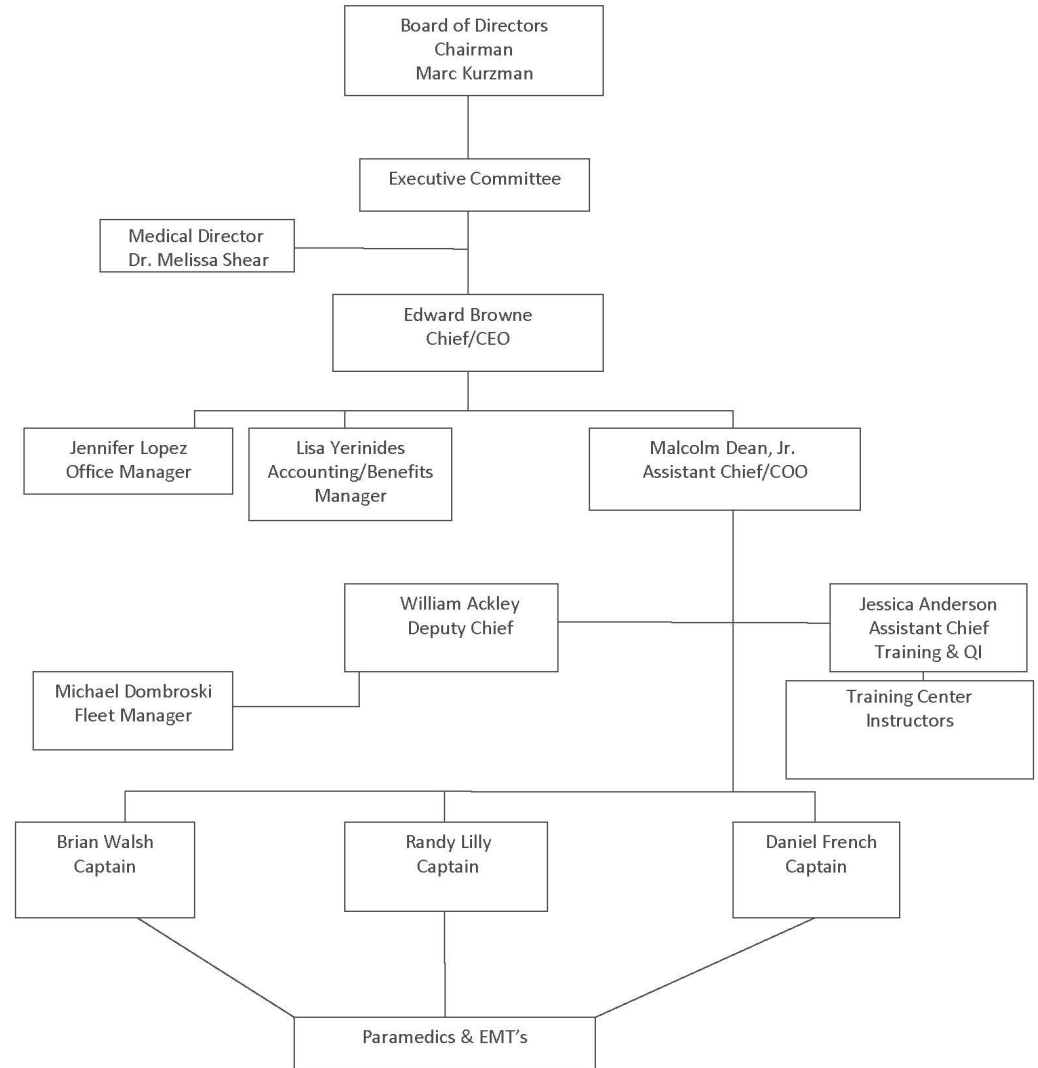
Stamford Emergency  
Medical Services

Edward Browne,  
Chief/CEO  
203-968-1118

March 24, 2025



# Department/Div. Organizational Chart



# Budget Presentation (FY 2026-27)



- Review of Budget Request (page 218)
  - Total funding requested
    - \$2,675,192 - Subsidy accounts for approximately 20% of SEMS operating expenses, similar to previous years.
- Highlights
  - Significant organizational/management/staff changes in 2025-2026
    - Some turnover in management resulted in several promotions:
      - Jessica Anderson and Malcolm Dean, Jr. were promoted to Assistant Chief
      - William Ackley was promoted to Deputy Chief
      - Randy Lilly and Daniel French were promoted to Captain
  - New or expanded services or programs
    - We have experienced a 25% increase in call volume in the last five years (14,566 in FY 20-21 vs. projected 18,648 in Current FY). We added an additional full-time ambulance starting in July 2024 during the peak daytime hours to cover the increased call volume. We continuously monitor system resources and add staffing when circumstances dictate.
    - Our new website, called HopeLine Connect, went live to share available resources with vulnerable populations in our area. We actively monitor the site to ensure resources remain current.
  - Abandoned or curtailed services or programs
    - None.
  - Key challenges or changes
    - Our call volume includes a significant number of calls for the treatment of patients who are unable to pay for our services, and as a result our bad debt remains high. We expect approximately \$2,400,000 in bad debt expenses this fiscal year.
    - Uncertainty in reimbursement from Medicare/Medicaid.
    - Replacement of the Medic 4 Station on Vine Rd and the new South End Station at Lathon Wider remain in progress.
  - Highlights from 25-26
    - We continue working with the Stamford Police Department Behavioral Health Unit on improving responses to calls involving mental health.
    - Several IT changes are in process or were completed this year including new payroll software and patient documentation software. We anticipate improvements in efficiency with these products.
    - We continue to explore expanding our services to meet the needs of the community.

# Budget Summary (FY 2026-27)



Stamford Emergency Medical Services, Inc.  
Budget v. Projected - Operating Statement Comparison Summary  
2025-2026 Budget v. 2026-2027 Projected

	2025-2026 Board Approved Budget	Actual YTD July 2025 thru January 2026 plus Projected February 2026 thru June 2026 (Projected Actual)	Projected 2026-2027 (includes City Increase Request)	Favorable (Unfav) \$ 2025-2026 Budget v. 2026-2027 Projected	Favorable (Unfav) % 2025-2026 Budget v. 2026-2027 Projected
<b>Revenues</b>					
Contract Services	3,347,604	3,099,473	3,260,000	(87,604)	-2.62%
Contributions	274,100	278,268	240,000	(34,100)	-12.44%
Patient Service Revenue-Net	8,957,000	8,746,084	9,040,000	83,000	0.93%
Other Revenue	192,996	173,302	180,000	(12,996)	-6.73%
<b>Total Revenues</b>	<b>12,771,700</b>	<b>12,297,127</b>	<b>12,720,000</b>	<b>(51,700)</b>	<b>-0.40%</b>
<b>Expenses</b>					
Wages	6,158,928	6,072,224	6,140,000	18,928	0.31%
Payroll Taxes	471,780	478,156	470,000	1,780	0.38%
Benefits	1,487,927	1,403,843	1,500,000	(12,073)	-0.81%
Medical Equipment and Supplies	501,546	422,786	280,000	221,546	44.17%
Vehicle	202,596	213,508	208,000	(5,404)	-2.67%
Radio	3,000	11,450	7,500	(4,500)	-150.00%
Occupancy	199,638	199,606	200,000	(362)	-0.18%
Insurance	570,408	586,449	645,100	(74,692)	-13.09%
Office Expense	71,400	81,757	81,800	(10,400)	-14.57%
Professional Expense	605,193	614,235	621,000	(15,807)	-2.61%
Other Operating Expense	182,756	180,507	181,000	1,756	0.96%
Net Bad Debt	2,328,820	2,382,255	2,430,000	(101,180)	-4.34%
Depreciation	180,000	180,000	180,000	-	0.00%
<b>Total Expenses</b>	<b>12,963,992</b>	<b>12,826,776</b>	<b>12,944,400</b>	<b>19,592</b>	<b>0.15%</b>
<b>Net Income (Loss) from Operations</b>	<b>(192,292)</b>	<b>(529,649)</b>	<b>(224,400)</b>	<b>(32,108)</b>	

Thank You!

