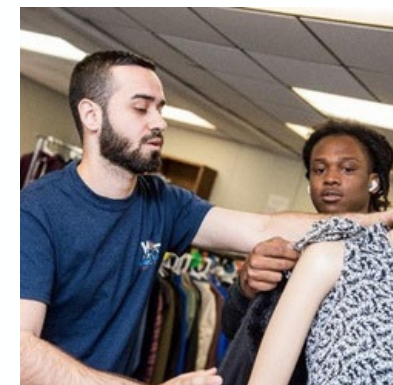
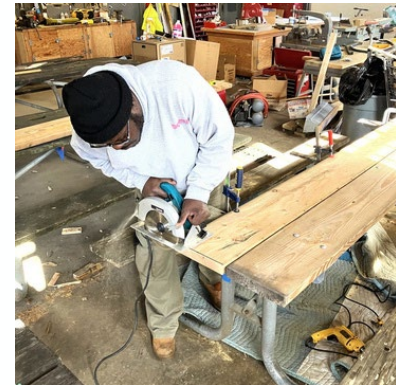
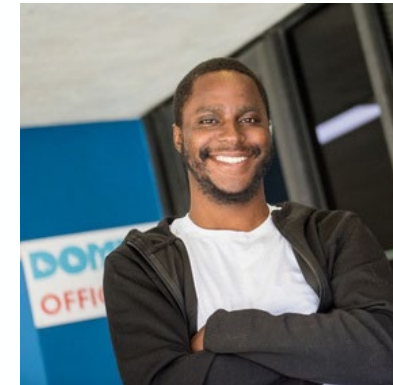




# Domus FY26 -27 Board of Representatives

April 9<sup>th</sup>, 2026



# About Domus

Domus' mission is to build loving relationships with young people facing adversity, empowering them to pursue their path to self-sufficiency. This commitment is evident across all Domus programming, ensuring that every young person we serve has access to the guidance and opportunities essential for long-term success.

Racial disparities in unemployment rates underscore the urgent need for targeted interventions that empower young people of color, particularly those facing significant adversity. Through DomusWorks, our workforce development program, we are dedicated to addressing these systemic challenges by equipping disengaged and disconnected youth with the skills, support, and opportunities they need to achieve long-term success.

We serve nearly 1,300 high-risk young people annually in Stamford through our programs. Specifically, in our School Engagement and workforce development programs, we aim to bridge educational and opportunity gaps by enhancing school retention and graduation rates, particularly for underserved groups. We provide family advocacy case management to address non-academic barriers and offer employment training that develops both soft and technical skills. Additionally, we support young people facing misdemeanor charges and those with criminal records in finding employment and reintegrating into the community after incarceration. Our goal is to equip participants with the tools needed to navigate life, education, and job training successful - ultimately leading to independent lives and family-sustaining employment.



# Updates and Changes

**Child Trends:** In 2025, Domus was evaluated by Child Trends, an independent national research organization which evaluated our programs and the Domus Relational Model.

## School Engagement

- **345** Students Served
- **84%** of 2024 graduates are on a path to self-sufficiency 12 months later
- **96%** of 12 grade students graduated
- **79%** on-time grade promotion
- **94%** student retention rate

## DomusWorks

- **84** Young People Served
- **100%** of 2024 graduates remained employed and thus on the path to self-sufficiency 1 year later
- **86%** participant retention rate
- DomusWorks continues to maintain Stamford Parks

## Discontinued Programs

- Here2Help
- After-School Spaces
- Domus Drop-in Center



# DomusWorks : Employment by Occupation

- **Most prevalent Occupations:** All-purpose construction, Customer service, Food prep, & Sales Associate/cashier, and Stocking/Unloading
- **Growing Occupations:** Customer service, Landscaping, and Stocking/Unloading
- Also, 6 youth in FY24, 7 in FY25, and 11 in FY26 enrolled in an Education/Training program (e.g.: DAE, Community College, Harbor Corps)

Hire Date	FY2026	FY2025	FY2024	FY2023	FY2022	Total
<b>Line of work</b>						
All-purpose construction	3	8	4	5	0	20
Caregiver	0	2	2	1	0	5
Customer service	7	3	9	3	3	25
Driver	2	4	2	1	0	9
Drivers Assistant	2	1	1	1	0	5
Electrical work	1	0	0	0	0	1
Food prep	1	4	3	5	4	17
Health/Safety	0	0	0	2	0	2
Landscaping	4	3	1	0	0	8
Maintenance/Cleaner	0	2	1	1	0	4
Military	1	0	0	0	0	1
Painting	1	1	0	0	1	3
Sales Associate/Cashier	5	4	6	3	7	25
Security	0	3	1	3	0	7
Stocking and Unloading	7	3	3	1	0	14
Youth services	0	2	3	4	5	14
<b>Total Jobs</b>	<b>34</b>	<b>40</b>	<b>36</b>	<b>30</b>	<b>20</b>	<b>160</b>
<b># of Unique Youth</b>	<b>28</b>	<b>34</b>	<b>30</b>	<b>20</b>	<b>14</b>	<b>103</b>

# Key Considerations FY26

**Funding volatility and contract pressure:** Domus and the programs that we provide should be protected in uncertain times because we prevent more expensive future problems. We are a key part of the infrastructure in Stamford that keeps youth in our community moving towards positive outcomes.

**Rising need among young people may outpace:** Stamford's district data points to real need: chronic absenteeism for all students is 19.4% versus 17.2% statewide<sup>1</sup>, the four-year graduation rate is 79.5% versus 88.9%<sup>2</sup> statewide, and college entrance for English learners in the class of 2024 was 36.7%. Stamford Public Schools also identifies chronic absenteeism and graduation as explicit priorities. The need is not evidence that the model or our collective work is failing. It is evidence that Domus and Stamford are working together in the hardest part of the system.

## Aligning Workforce Demand with Prepared Talent

Connecticut's labor market is evolving, with projected growth across healthcare, education, public administration, and manufacturing through 2026. The challenge lies in ensuring that local employers have access to a workforce that is not only technically prepared but also equipped with the soft skills, reliability, and support systems needed to succeed and stay employed.

DomusWorks is uniquely positioned to meet this moment by going beyond traditional training models. Through a combination of soft-skill development, paid work experience, individualized coaching, and long-term retention support, Domus is building a workforce pipeline that is ready for the demands of today and adaptable for the future, while offering local businesses a more dependable and prepared talent pool.

