

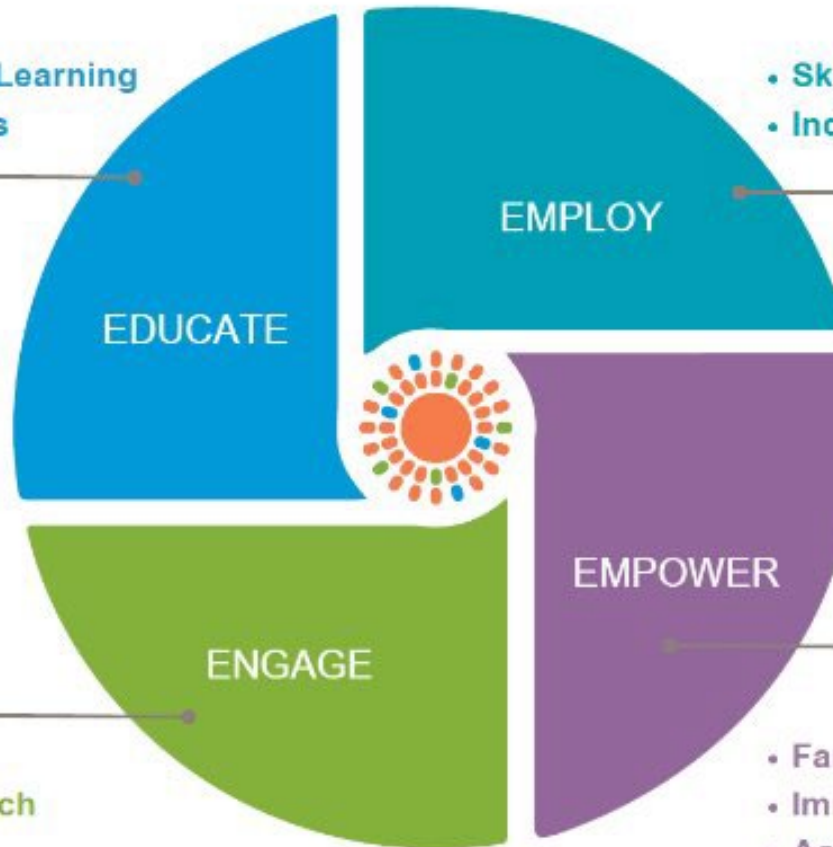


building **one**
community™

The Center for Immigrant Opportunity

Reflecting on 2025, Shaping 2026

- English Language Learning
- Citizenship Classes



- Skills Development Program
- Industry Specific Training

- Volunteers
- Community Outreach

- Family Services
- Immigration Legal Services
- Academic Enrichment

2025 Highlights

- **Building One Community saw increases across all program areas:**
- **Overall Participation**
 - **Over 5,650** B1C program participants
 - **Over 9,500** attendances to community focused training events
 - ***More than double participation from previous year***
- **Immigration Legal Services (ILS)**
 - **Hosted 586** participants in ILS Q&A and webinar
 - ***More than double participation from previous year***
- **Citizenship Classes**
 - **Helped 21** participants become new citizens
- **Skills Development Classes**
 - **Taught 428** unique people, **51% increase**
- **Family Services**
 - **Served 2,440** unique participants, **23% increase**



building one
community™

The Center for Immigrant Opportunity

Program Overviews

English Language Classes (ELL)

2025, a year of transitions

- Externally, the political climate

Despite this uncertainty

- 860+ unique participants
- Over 1,890 ELL sessions

Citizenship Classes

- 21 new citizens



ELL Volunteer Training Session



ELL volunteers and participants celebrate Thanksgiving together

2026 ELL Initiatives

1. Rollout of **themes-based instruction**

This approach provides structure and consistency for learners and volunteers.

2. Introduction of weekly **"Community of Learners" gatherings**

Gatherings between class time and tutoring to support community building between staff, learners, and volunteers..

3. Build-out of **online ELL programming**

Expansion of our online ELL classes and tutoring sessions.

Workforce Development in 2025

Across all programs:

- **760+** unique participants
- **Over 4,970** touchpoints
- Average of **6.46** touchpoints per participant



Workforce Development in 2025

Skill Development Program

Cohort-based Classes

- Industry-recognized credentials
 - OSHA, CPR
- IT classes, three levels
- Entrepreneurship program
- Culinary classes

Participation

- **420** unique learners
- **2,326** total class attendees

Results

- **85%** of learners earned a Skills Development Program certificate
- **22** businesses launched



Day Worker Center

Services provided

- Workforce Skills Development
- Mental health support
- Wage recovery
- Worker's Council
- Legal Services
- Health Clinic

Participation

- **428** unique workers
- **2,521** service touchpoints, **15%** increase from 2024



Workforce Development 2026 Priorities

Year-Round Technology Classes:

- Offer consistent, accessible technology training throughout the year to strengthen digital literacy and workforce readiness.

Mental Health Support for the Day Labor Community:

- Continue providing culturally responsive mental health sessions that address stress, trauma, and overall well-being.

Wraparound Services:

- Maintain holistic support services, including grocery assistance, legal consultations, and one-on-one appointments to address immediate and long-term needs.

Ongoing Legal and Logistical Support:

- Continue supporting the day labor community through legal consultations, court accompaniment, and travel logistics as needed.

Afterschool Enrichment in 2025



- **Over 160 unique participants**
- **Touchpoints per participant more than doubled**, rising from 15.0 to 32.5
- **Deepened Engagement:**
 - Springboard attendance increased over 30%
 - Workshop attendance grew four-fold
 - Community-led sessions more than doubled
 - Support service deliveries and referrals more than tripled
- **Introduced Parent Engagement Program:**
 - Expanded collaboration across B1C introduced ELL and technology, workshops tailored to after-school families

2026 Academic Enrichment Priorities

Focus Areas

- **1. Dynamic, Needs-Based Family Learning**
 - Partner with B1C teams and community organizations
 - Deliver targeted family workshops aligned to community needs
 - Increase service deliveries through stronger collaboration and referrals
- **2. Expanding Student Learning & Success**
 - Reintroduce enrichment: art, music, and science alongside homework support
 - Add volunteer-led social-emotional and wellness activities
 - Launch Rising First Graders Program with required family workshops

Family Services (FS) 2025

2,440+ unique participants
6,700+ Touchpoints

Case Management

- Basic Needs Assessments: 382 (Financial Assistance, Housing, Food Access)
- Service Access Surveys: 282
- 90% improved their quality of life

Cases

- Cases worked on: 154
- Reassessed cases: 81% improved in at least one area of need

One-time Services

- Participants received services: 2,000+
- Economic Value Services & Donations: \$336,000+
- NEW! Attendances for Community Support & Ed. Services: 6,900+/295% increase

Tax Preparation

- Taxes Filed: 948
- Program Growth (since 2022): 330%
- Total Refunds: \$1,222,007
- Total Est. Taxpayer Savings: \$284,400

Community Basket

- Total Food Services Provided: 6,884
- Pounds of Food Distributed: 172,100

Healthy Steps

- Engage
- Refer
- Raise Awareness



Family Services: Opportunities for Growth 2026

- Strengthen health and mental health services to support families of deportees and those living in uncertain conditions
- Expand donations initiative and in-kind corporate support



Immigration Legal Services (ILS) in 2025

- **Increased Community Education:**
 - Presented more know-your-rights events, particularly on the end of TPS and Humanitarian Parole, in Spanish and Haitian Creole
 - Screened Haitian participants for asylum claims
 - Provided targeted consultations for workforce development participants
- **Reviewed and updated ILS practices:**
 - Evaluated tech system for vulnerabilities and implemented security changes
 - Enacted new ILS procedures for protection of digital confidential information
- **Launched communications project** to create informational videos, in three languages.

ILS 2026 Outlook

Challenging Climate

- Expect more enforcement and narrowing of paths to legal status
- More detentions - at ICE check-ins and immigration interviews
- **Our primary objective:**
 - **Provide trustworthy legal information to the immigrant community and their supporters**
 - Continue to provide targeted information-only consultations for B1C participants
 - Continue to host public events