

**2026/2027 Budget
guided by the
Long Term Facilities Report**

**Life Safety
Accessibility
Weatherproofing
Sustainability**

Life Safety



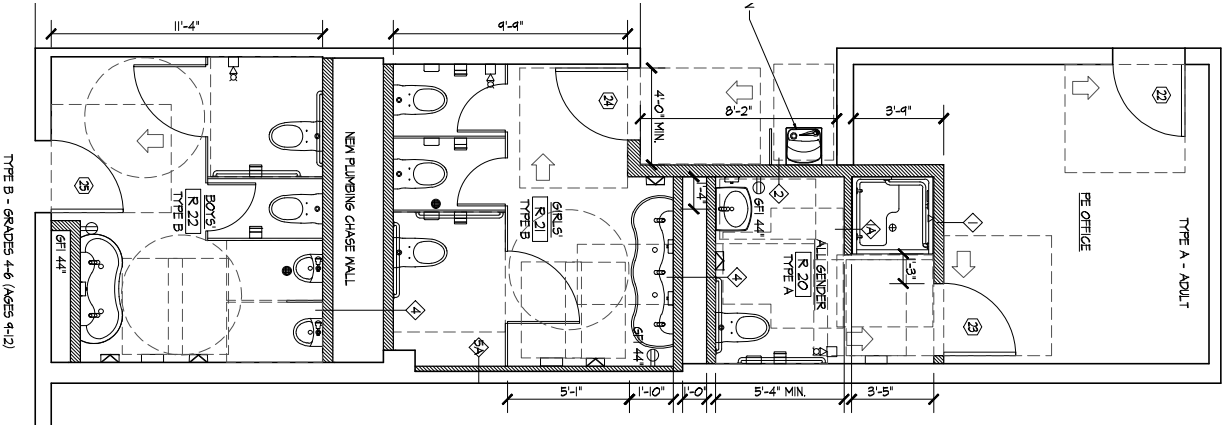
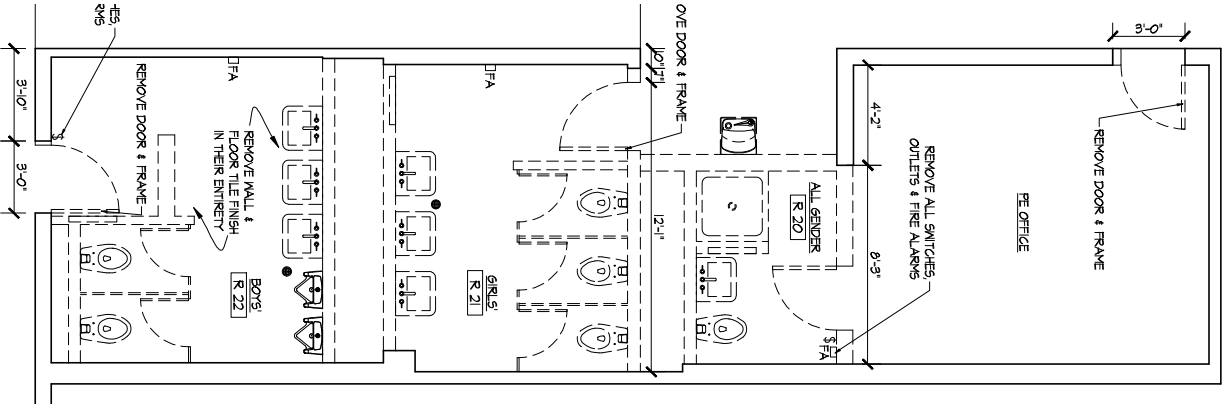
Fire Alarm Systems



Switchgear

Indoor Air Quality

Accessibility



TYPE B - GRADES 4-6 (AGES 9-12)

Restroom Compliance

Weatherproofing



Turn of River Middle School



Davenport Elementary



Hart Elementary School



Stamford High School

Sustainability



Rogers School



Strawberry Hill School



Westover Elementary School



Stamford High School

FISCAL YEARS 2025/2026 (black) & 2026/2027 (blue)

District Wide

<i>School Security Infrastructure</i>	\$400,000	
School Security Infrastructure	\$500,000	
<i>AHERA Action Response</i>	\$50,000	
<i>District Wide Long Term Implementation</i>	\$50,000	
<i>District Wide Paving</i>	\$350,000	
District Wide Athletic Account	\$1,500,000	In Design
District Wide Athletic Account	\$1,000,000	

AITE High School

<i>Exterior Envelope</i>	\$1,800,000	
Exterior Doors, Gym Wall	\$400,000	Design Completed 2024
<i>HVAC Gymnasium</i>	\$100,000	<i>DAS Grant Available</i>

Anchor School

~~*HVAC/MEP*~~ ~~\$250,000~~

Stamford High School

<i>Flooring Abatement</i>	\$3,000,000	<i>DAS Grant Available</i>
<i>Auditorium Rigging</i>	\$250,000	<i>Design Only</i>

Westhill High School

New Construction

FISCAL YEARS 2025/2026 (black) & 2026/2027 (blue)

Dolan Middle School

No Capital Allocations 2025/2026

Cloonan Middle School

No Capital Allocations in 2025/2026

Rippowam Middle School

BMS Design \$250,000

BMS HVAC \$1,000,000 DAS Grant Available

Rogers International Baccalaureate School (K-8)

Exterior Envelope \$175,000

Roof Replacement \$1,750,000 DAS Grant Available

Scofield Middle School

No Capital Allocations in 2025/2026

In Design

Strawberry Hill School (K-8)

~~Roof and Masonry Historic Bldg. \$2,500,000 DAS Grant Available~~

FISCAL YEARS 2025/2026 (black) & 2026/2027 (blue)

Turn of River Middle School

HVAC RTU

\$500,000

New Roxbury School (K-8)

New Construction



Davenport Elementary School

Electrical Improvement

\$400,000

Hart Elementary School

No Capital Allocations in 2026/2027

FISCAL YEARS 2025/2026 (black) & 2026/2027 (blue)

K.T. Elementary School
New Construction

Newfield Elementary School
HVAC Phase II

\$2,000,000

In Design

Northeast Elementary School

Roof Replacement

\$1,500,000

DAS Grant Available

Wall Repairs Phase II

\$500,000

Springdale Elementary School

~~*Exterior Windows and Masonry*~~ ~~—————~~ ~~\$100,000~~

~~*HVAC*~~ ~~—————~~ ~~\$1,500,000~~

Julia A. Stark Elementary School

Fire Pump & Generator

\$1,000,000

FISCAL YEARS 2025/2026 (black) & 2026/2027 (blue)

Stillmeadow Elementary School

~~Roof Replacement~~ ————— ~~\$1,800,000~~ ————— ~~DAS Grant Available~~

Toquam Elementary School

No Capital Allocations in 2025/2026

Westover Elementary School

No Capital Allocations in 2025/2026

Total Capital Projects FY 2026/2027 ~~\$26,175,000~~ \$12,325,000

FY 2025/2026
\$2,480,000 BOE Capital Adopted

FY 2026/2027
\$12,325,000 BOE Capital Need
\$3,892,500 Anticipated Remibursement