

# City of Stamford Water Pollution Control Authority

## FY 2019-20 BOR Fiscal Committee and BOF Budget Presentation





# ***Stamford Water Pollution Control Authority***

## ■ **Purpose / Mission**

*Cost effectively construct, operate and maintain wastewater facilities that meet the needs of our customers, protects Stamford Harbor and Long Island Sound and complies with all City, state and federal regulatory requirements, while providing a safe and rewarding work environment for our staff.*



# ***Stamford Water Pollution Control Authority***

## ■ **Services**

- *Wastewater collection and treatment for the City*
- *Wastewater treatment for Darien (revenue of \$3.4 million)*
- *Operate and maintain Hurricane Barrier and Storm Water Pumping Stations*

## ■ **Facilities**

- 250 miles of sanitary sewers
- 23 Wastewater Pumping Stations
- Advanced Water Pollution Control Facility
- 4 Storm Water Pumping Stations

## ■ **Staff**

- 45 Full time staff

# ***Completed \$2.4 million Upgrade of Dyke Lane Storm Water Pump Station***





## ***SWPCA Challenges***

- SWPCA facilities and operations are heavily regulated by CTDEEP and USEPA
- CTDEEP requires operation of the treatment plant by certified operators 24 hrs/day, 365 days/year
- Performance of the treatment plant is monitored by extensive on line instrumentation, sampling and on-site laboratory testing
- Provide advanced treatment of 5,600,000,000 gallons of wastewater each year with a goal of no permit exceedance.
- Sewer system operation and maintenance must conform to a Capacity Management and Operation and Maintenance (CMOM) Plan required by USEPA
- Treatment Facilities must be approved by CTDEEP and meet design guidelines established by the New England Interstate WPC



## ***SWPCA Challenges for FY 19-20***

- Succession planning as key personnel approach retirement age
- Limited pool of talented Class III and IV Operators in Connecticut makes it difficult to fill key positions
- Portions of WPCF are aged and need upgrading
  - UV disinfection system, raw sewage pump station and aeration blowers at end of their useful life.
- Planned \$40 million in capital improvements over two years starting in the summer of 2019 including:
  - \$31 million in treatment plant improvements
  - \$9 million for sewer and pump station rehabilitation and sewer extensions
- Planned \$19.6 million revenue bond issue in spring 2019
- Planned \$20 million revenue bond issue in spring 2020

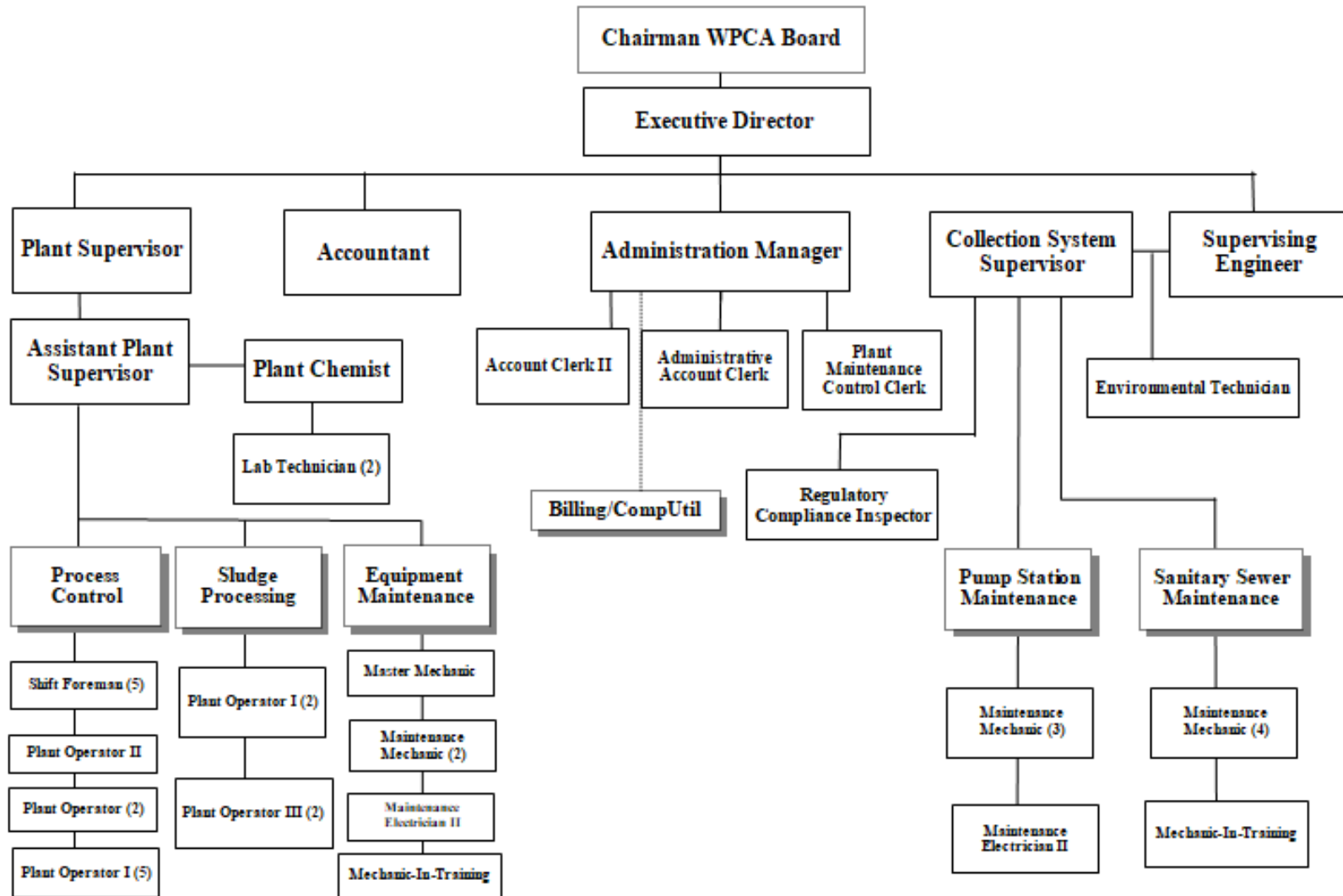


## ***Changes in FY 19-20 Operating Budget***

- Staffing changes to better meet SWPCA needs:
  - Eliminated Laboratory Director (retirement)
  - Added Plant Chemist and eliminated one (1) Laboratory Technician (through promotion)
  - Added Environmental Technician
  - Added (1) Operator in Training
  - Replaced three (3) Utility Workers with two (2) Mechanics in Training and one (1) Operator in Training
- Net increase in total SWPCA staff from 45 to 46 at additional annual salary cost of \$6,182
- Includes debt service of \$1.27 million for new revenue bond issue of \$19.6 million in spring 2019



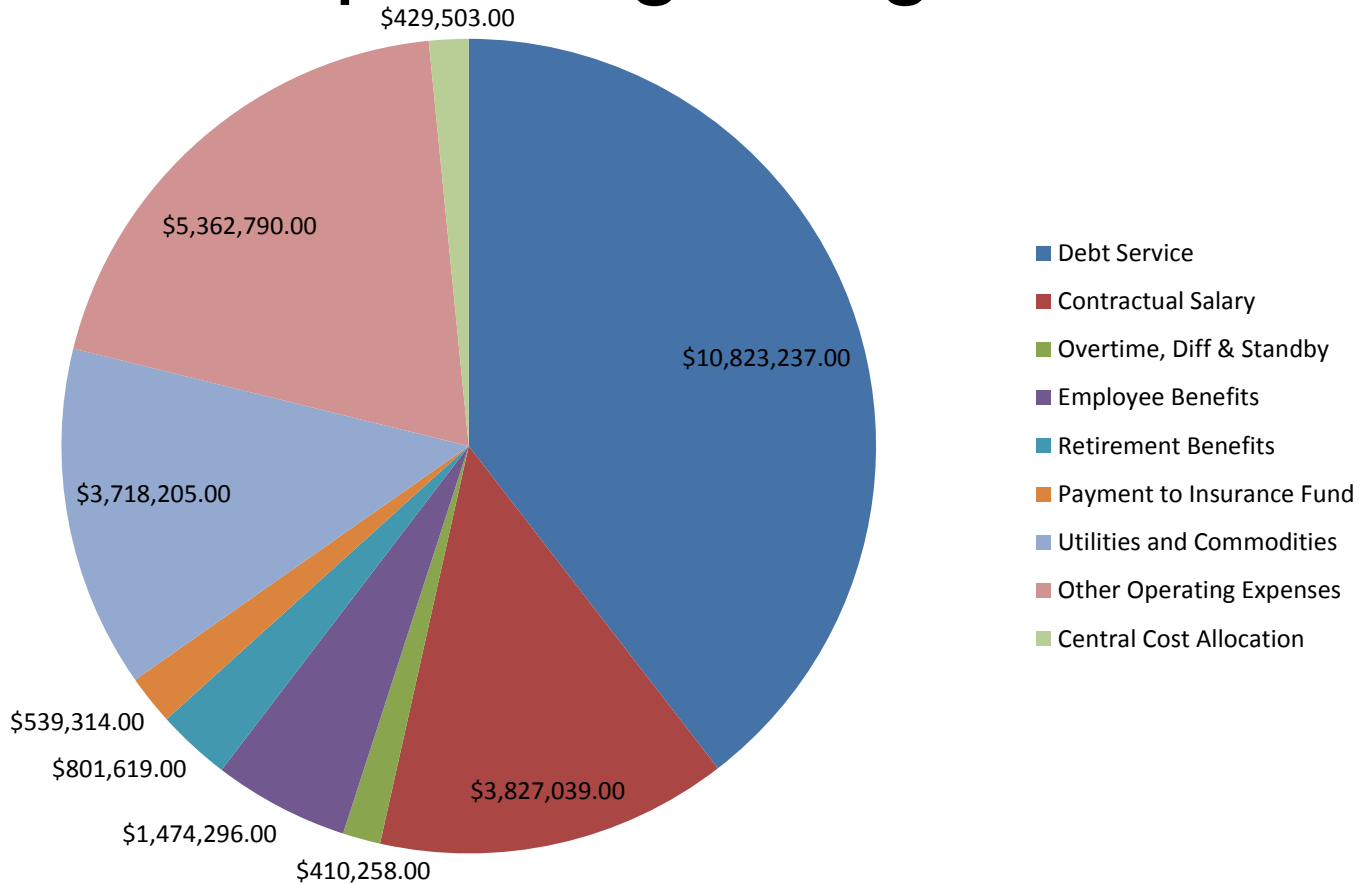
City of Stamford  
Office of Operations  
Water Pollution Control Authority







# FY 19-20 Operating Budget



**\$27,485,691**  
Total FY 2019/2020 Budget

**\$210,141 (0.8%)**  
Increase over FY 2019 Budget



## ***SWPCA FY 19-20 Capital Project Request***

- **CP6904 WPCA Major Equipment Replacement** **\$940,000**
  - Recurring account for major repairs or replacement of process equipment at the treatment plant including pumps, mixers and sludge thickening and dewatering equipment.
- **000665 Replacement of Plant water and RAS Pumps** **\$1,500,000**
  - Replace the return activated sludge (RAS) pumps which are over 40 years old, and upgrade and reconfigure the plant water pumps
- **C22046 Perna Lane Area Sewer Extension** **\$925,000**
  - City's cost for storm sewer and roadway improvements as part of first phase to extend sanitary sewers to the Perna Lane Area, between High Ridge Road and the Rippowan River north of the Merritt Parkway.
- **C20052 Wedgemere Road Sewer Extension Project** **\$500,000**
  - City's cost for storm sewer and roadway improvements associated with extending sanitary sewers to Wedgemere, White Oak, Emerald Lane and a section of Eden Road.