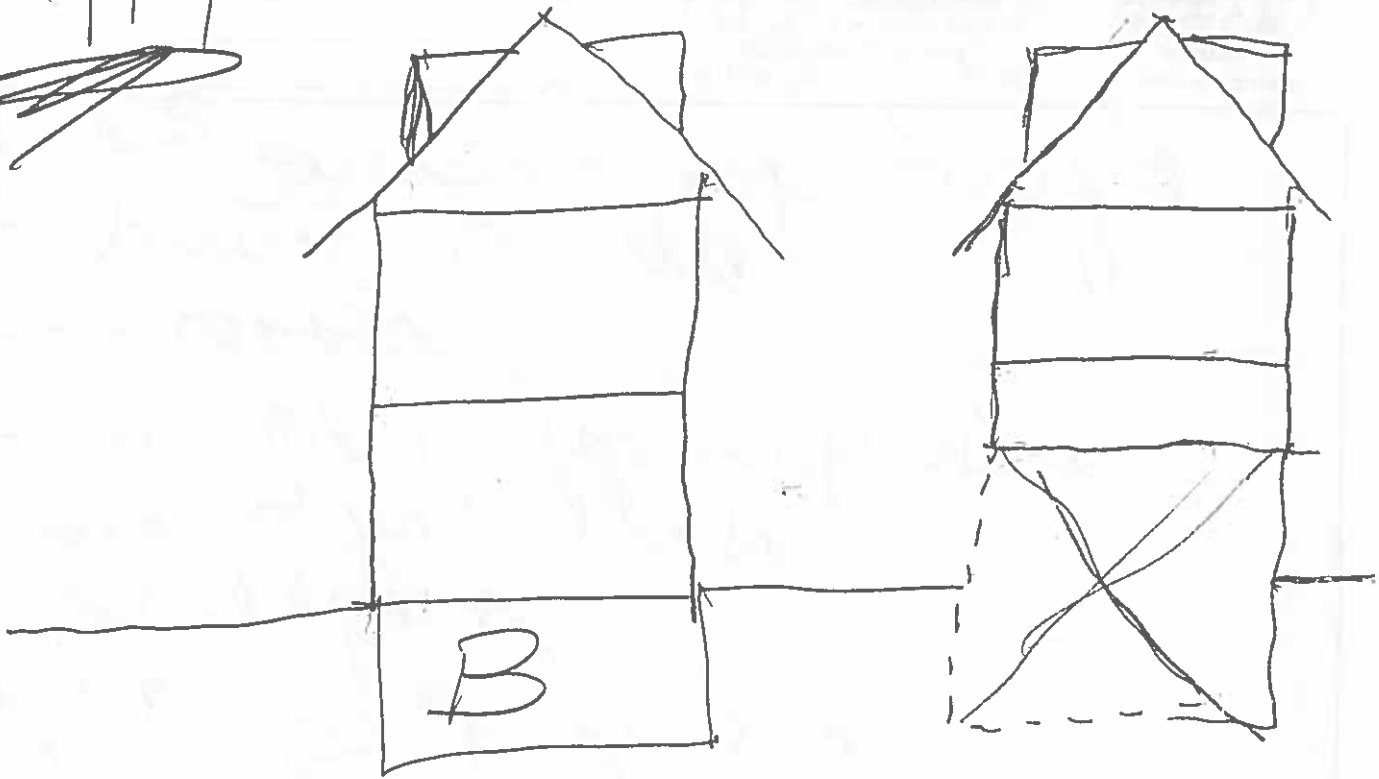


1/6/14



West part 5'  
1/1 of Run  
Channel

Rec'd @  
PH 01/06/14



Parsons Bromfield-Redniss & Mead  
ENGINEERS • PLANNERS • SURVEYORS  
ENVIRONMENTAL CONSULTANTS  
22 First Street • P.O. Box 3247  
Stamford, CT 06905-0247  
Tel: (203) 327-0500 Fax: 357-1118

Incorporated

Request you approve P.A. 1  
all the sound bang  
regions

when you get CAM up -  
we'll try to meet w/  
neighbors  
but if you feel nec  
P.H. 1

---

Since owners of 2 lots of K  
can't be here  
their attorney is  
Kani