

Stanley Court Affordable Housing



WASHINGTON BLVD.

N/Y
80 WEP-1361 LLC
Map No. 13786 S.L.R.

Existing Building Approximate on Line as per Plat Map No. 13786 S.L.R.

N/Y
80 WEP-1361 LLC
Map No. 13786 S.L.R.

N/Y
THIRTEEN 18WB LLC
Map No. 9346 S.L.R.

N/Y
City of Stamford
AREA = 28,144 SQ FT
(Shaded Area)

N/Y
STEPHANE DEVELOPPES

N/Y
VILLIAN DEVELOPPES JR

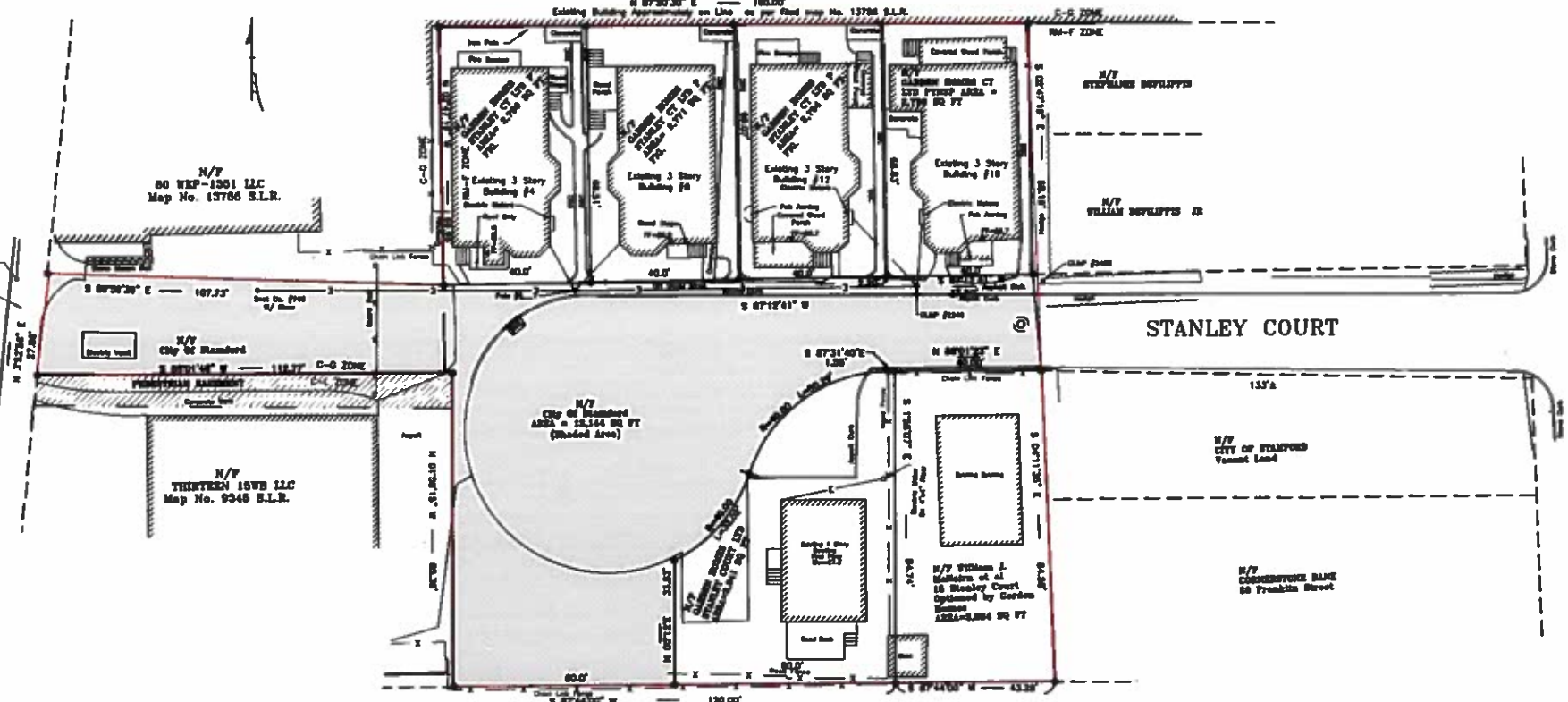
STANLEY COURT

N/Y
CITY OF STAMFORD
Vacant Land

N/Y
CORNERSTONE BANK
88 Franklin Street

FRANKLIN STREET

NOTES:
1. Underg
complicat



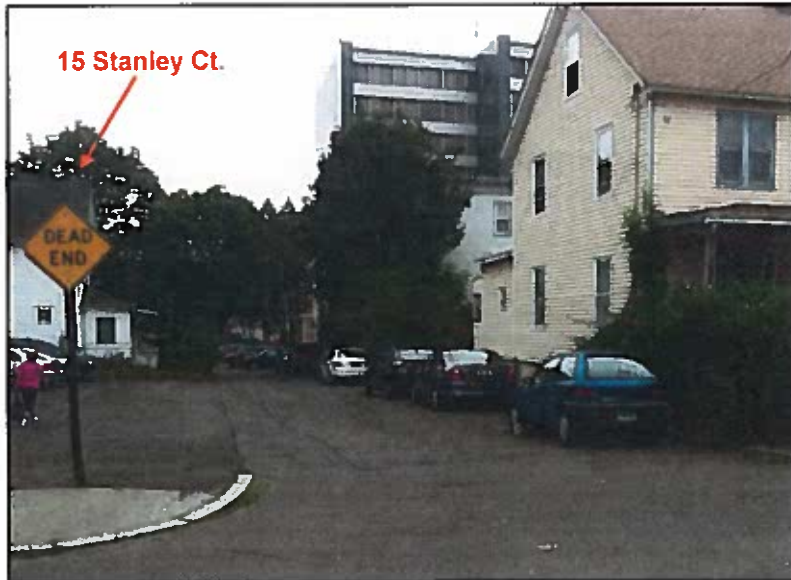
4, 8 and 12 Stanley Ct. with 1351 Washington Blvd. in background



Rear of 1315 Washington Blvd. looking across cul-de-sac



Looking down Stanley Ct. from Franklin St.



3 Stanley Ct. (mobile home) looking across cul-de-sac



15 Stanley Ct.



8 and 12 Stanley Ct. with parking garage in rear



City-owned land between 1315 and 1351 Washington Blvd.



Aerial view from the east looking west



Unit Sizes and Rents in recent Stamford multifamily construction

| | Building | Total Units | Year Built | Studio | | 1BR | | 2BR | |
|--------------|-----------------------------|-------------|------------|--------|----------|--------|----------|----------|----------|
| | | | | Size | Rent | Size | Rent | Size | Rent |
| Garden Homes | 111 Prospect Street | 55 | 2009 | 450 sf | \$1,150 | N/A | | N/A | |
| | 25 Third Street | 50 | 2010 | 450 sf | \$1,150 | 525 sf | \$1,350 | 900 sf | \$1,700 |
| | 800 Summer Street | 89 | 2012 | 350 sf | \$1,050 | N/A | | N/A | |
| | 1032 Hope Street (approved) | 88 | 2014 | 480 sf | \$1,100* | 600 sf | \$1,350* | 800 sf | \$1,600* |
| | | | | | | | | | |
| Other new | 100 Prospect Street | 82 | 2009 | N/A | | 644 sf | \$1,848 | N/A | |
| | Lockworks at Yale & Towne | 329 | 2011 | 567 sf | \$1,731 | 683 sf | \$1,851 | 1,029 sf | \$2,635 |
| | Paraellel 41 (Wash. Blvd.) | 124 | 2012 | N/A | | 734 sf | \$2,190 | 1,102 sf | \$2,655 |
| | Glenview House | 146 | 2007 | N/A | | 824 sf | \$2,227 | 1,168 sf | \$3,059 |

* Projected