



Stamford WPCA Operating and Capital Budget for FY 24-25

Presentation to

Board of Representatives Fiscal Committee

March 19, 2024

William Brink, Executive Director

Rhudean Bull, Administration Manager



Stamford Water Pollution Control Authority

- Enterprise fund within City
- Nine (9) member Board of Directors
- Provides wastewater collection and treatment services for sanitary sewer areas of the City
- Receives septage from non-sewered areas of City
- Provides wastewater treatment for the Town of Darien
- Operates and maintains the City's Hurricane Barrier and three (3) storm water pump stations
- Total staff of 47



Highlights of Proposed Operating Budget for FY 24-25

- No change in services, programs or number of SWPCA staff
 - Includes energy efficiencies and reduction in methanol use resulting from treatment plant upgrades completed in 2022 and participation in Eversource's Strategic Energy Management team program
 - Electrical energy supply cost per kWh fixed from Nov. 2023 through Nov. 2025
 - Includes the final debt service payment for the \$74 million CWF loan for the major wastewater treatment plant upgrade completed in 2004
- Total Expenditures of \$28,923,297 an increase of \$595,585 or 2.1%
- Total Revenue of \$29,552,956 an increase of \$533,080 or 1.8%

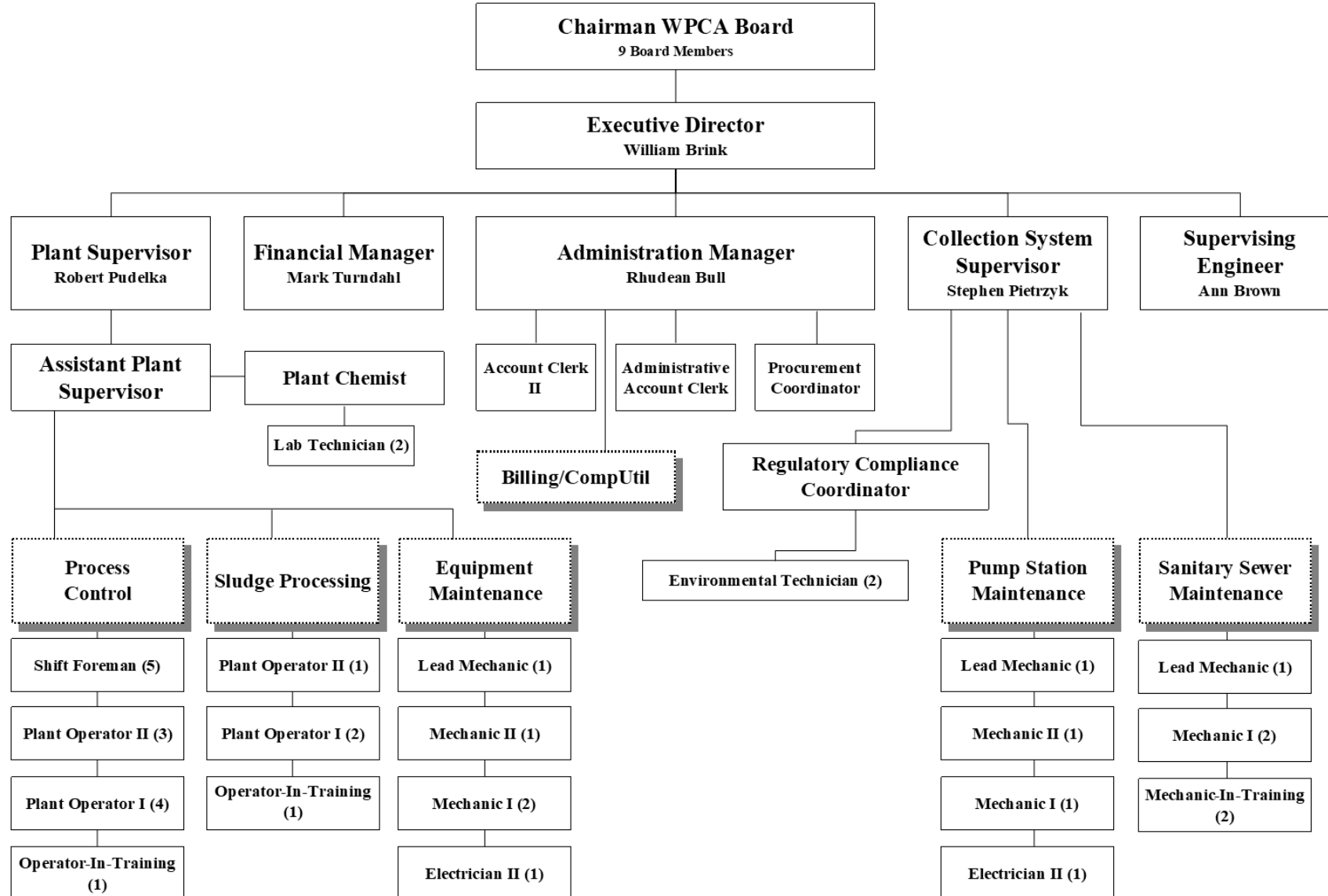


Highlights of improvements to be made in FY 24-25

- Complete the upgrade of the primary sludge pumping and degritting system to replace aged equipment with newer, more efficient technology (\$9.1 million).
- Replace equipment in Primary Clarifier No. 1 and Final Clarifier No. 3
- Begin construction of the Perna Lane Sewer Project (\$8.2 million)
- Replace the Saddle Rock Rd Pumping Station
- Perform electrical energy efficiency measures identified in SWPCA's participation in Eversource's Strategic Energy Management Program
- Purchase of new jet/vac truck used for cleaning sanitary sewers
- Design improvements to the hurricane barrier pump stations funded by FEMA BRIC grant (75%)



**City of Stamford
Office of Operations
Water Pollution Control Authority**





Capital Project Requests

- C71196 CMOM- Sewer capacity management, operation and maintenance \$600,000
 - Next phase of the infiltration and inflow removal program to remove surface and groundwater from the sanitary sewer system.
- CP9270 Sanitary Pumping Station Upgrade \$2,100,000
 - Saddle Rock PS upgrade construction, Alvord Lane PS and Commerce Drive PS upgrade design, and misc. pump equipment replacement
- C71282 Vehicle Replacement and Repair \$700,000
 - Replace aged jet/vac truck that is 40 years old with new to clean sanitary sewers and manholes