



**Stamford WPCA Operating and Capital Budget for FY 23-24**  
**Presentation to**  
**Board of Finance and Board of Representatives Fiscal Committee**

March 21, 2023

William Brink, Executive Director  
Rhudean Bull, Administration Manager



## Stamford Water Pollution Control Authority

- Enterprise fund within City
- Nine (9) member Board of Directors
- Provides wastewater collection and treatment services for sanitary sewer areas of the City
- Receives septage from non-sewered areas of City
- Provides wastewater treatment for the Town of Darien
- Operates and maintains the City's Hurricane Barrier and three (3) storm water pump stations
- Total staff of 47



## SWPCA's Mission

To provide wastewater collection and treatment for the City that meets regulatory requirements and protects the water quality of Stamford Harbor and Long Island Sound, to provide these services in the most cost-effective manner to control costs and the impact on sewer user charges, all while being a good neighbor to those in proximity to our wastewater collection and treatment facilities.

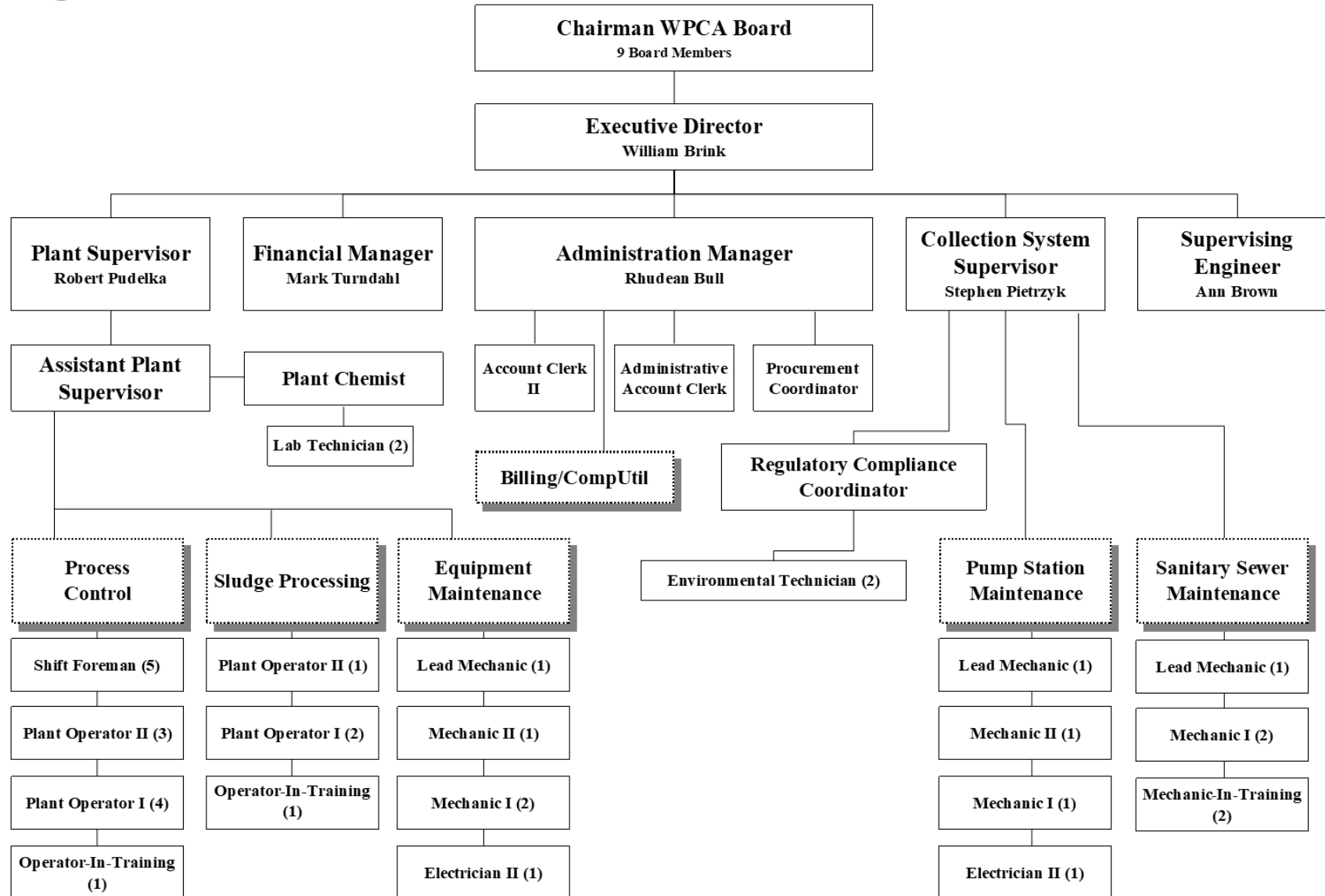


## Highlights of Proposed Operating Budget for FY 23-24

- No change in services, programs or number of SWPCA staff
- Includes reorganization of SWPCA mechanics, with new positions of Mechanic I, Mechanic II and Lead Mechanic assigned to appropriate cost center
- Includes energy efficiencies and reduction in methanol use from plant upgrade completed in 2022
- Total Expenditures of \$28,327,712, an increase of \$693,596 or 2.5%
- Total Revenue of \$29,022,712 an increase of \$757,891 or 2.7%



**City of Stamford  
Office of Operations  
Water Pollution Control Authority**

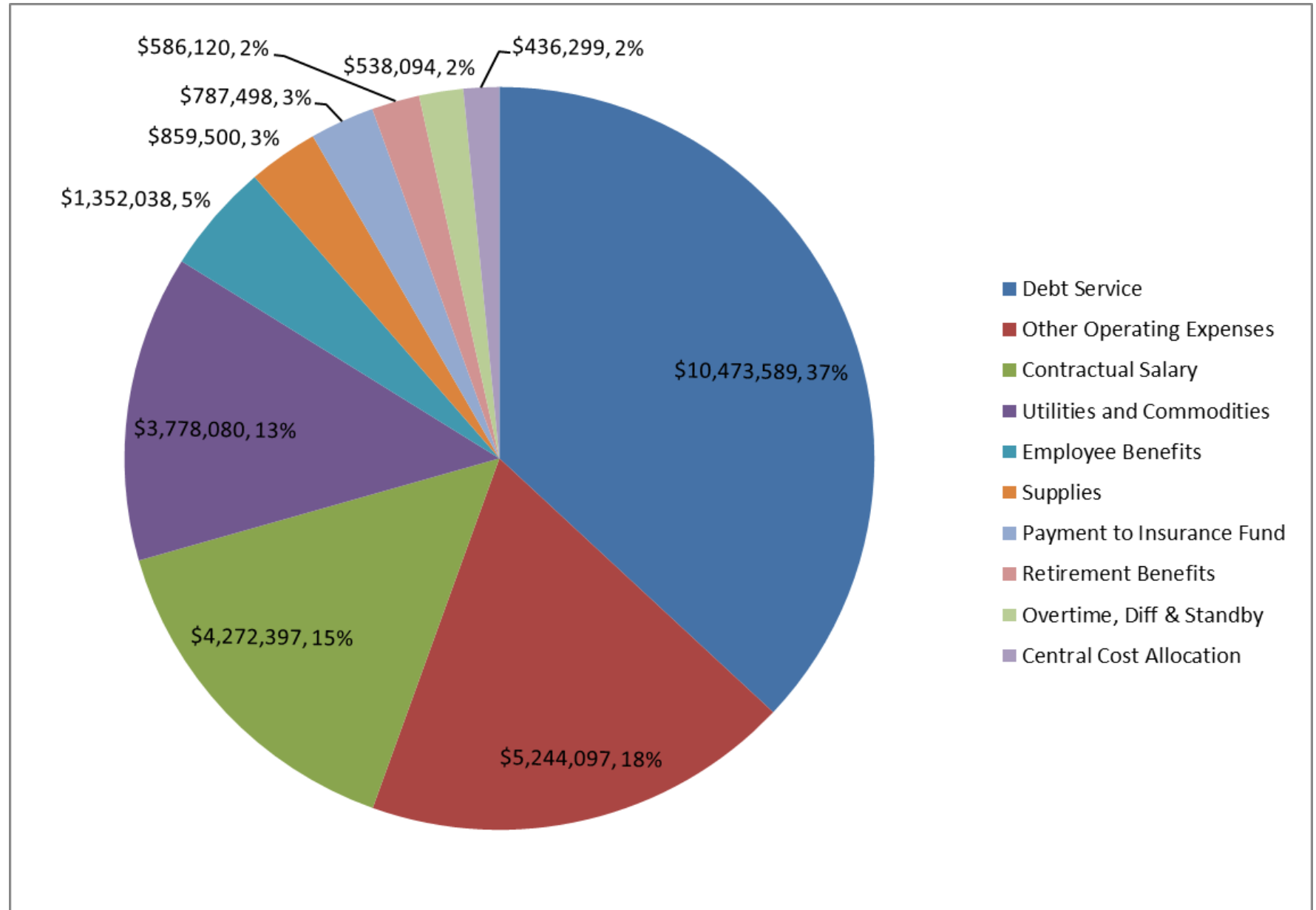




**FY23-24 Operating Budget**

<b>Debt Service</b>	<b>\$10,473,589</b>
<b>Other Operating Expenses</b>	<b>\$5,244,097</b>
<b>Contractual Salary</b>	<b>\$4,272,397</b>
<b>Utilities and Commodities</b>	<b>\$3,778,080</b>
<b>Employee Benefits</b>	<b>\$1,352,038</b>
<b>Supplies</b>	<b>\$859,500</b>
<b>Payment to Insurance Fund</b>	<b>\$787,498</b>
<b>Retirement Benefits</b>	<b>\$586,120</b>
<b>Overtime, Diff &amp; Standby</b>	<b>\$538,094</b>
<b>Central Cost Allocation</b>	<b>\$436,299</b>
<b>Total FY23-24 Budget</b>	<b>\$28,327,712</b>

Other Operating Expense: Legal, All Contracted Services, Purchased Property





## Major Variances of Expenditures from Prior Year

- Contractual increase in wages for operators and mechanics in renewal of IUOE agreement (from 7/1/21) of \$213,406
- Increase in Active Medical and Payments to Insurance Fund of \$217,514 offset by reduction in Pension Fund, OPEB Service Costs and UAL Amortization of (\$221,150)
- Increase in Sludge Dryer Operating Contract of \$151,000 (+7.1%) pegged to increase in CPI and increase in sludge hauling and disposal costs.
- Increase in natural gas for sludge dryer of \$343,573 (+71%)

Note: Electrical costs stabilized by fixed supply cost contracts through November 2025 (+1.6%)



## Major Variances of Revenue from Prior Year

- Increase in interest income from cash reserve of \$450,000 (+900%)
- Increase in connection charges (principal) of \$200,000 (15.4%) from new construction
- Increase in Darien treatment charge of \$219,000 (+11%) based on metered flow
- Decrease in Darien capital reimbursement of (\$495,000) (-29.5%)
- Increase in Sewer Use Fees of \$564,420 (2.7%)
- Decrease in Aquarion User Charges (\$203,920) or (-69.9%)
  - Aquarion will cease discharge of WTP sludge





## Capital Project Requests

- 001313 Collection System Staff Building \$450,000
  - Existing 1940's metal building is beyond repair
- CP6904 WPCA Major Replacement \$820,000
  - Upgrade final clarifier No. 3 and misc. equipment replacements at WPCF
- CP4242 Sanitary Sewer Rehabilitation \$865,000
  - Misc. sewer and manhole repairs, lining sewers and manholes to remove extraneous water identified by infiltration and inflow removal program
- CP9270 Sanitary Pumping Station Upgrade \$1,050,000
  - Saddle Rock PS upgrade construction, Alvord Lane PS upgrade design, and misc. pump equipment replacement
- C71282 Vehicle Replacement and Repair \$50,000
  - Replace aged vehicles