

City of Stamford
DEPARTMENT OF HEALTH & SOCIAL SERVICES

FY 2016-17
Budget Presentation

Ted Jankowski, Director of Public Safety, Health & Welfare
David Knauf, Interim Director of Health & Social Services

March 15, 2016
Board of Finance

April 27, 2016
Board of Representatives





Department Health & Social Services

■ Mission

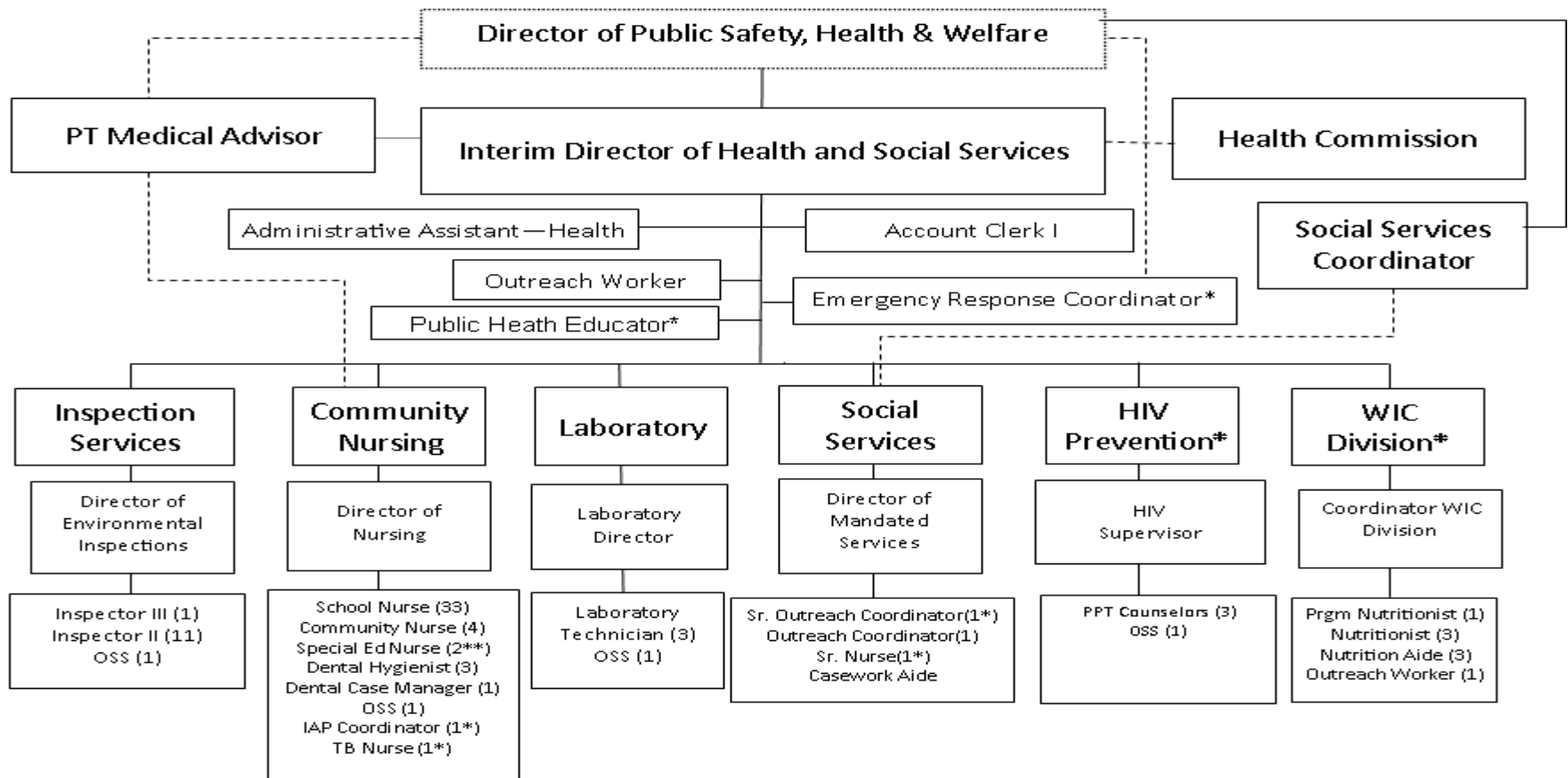
- To promote wellness and healthy lifestyles, prevent disease and injury, and proactively protect the health, safety, and well-being of the public and our environment.

■ Programs

- Environmental Inspections
- Nursing & Dental Hygiene
- Social Services
- Laboratory
- Women, Infant, and Children (WIC) Program
- HIV Prevention

Department Organization, Personnel and Resources

City of Stamford
Office of Public Safety, Health and Welfare
Department of Health and Social Services



* Grant Funded Program
** Funded by the BOE

Mandated Services Provided

- **Relocations:** CT General Statute Chapter 135 sections 8-266-8-282
- **Relocation Lien:** CT General Statute Chapter 135 sections 8-270a
- **Eviction Storage:** CT General Statute Chapter 832 section 47a-42 & 47a-42a
- **Renter's Rebate:** CT General Statute Chapter 98 sections 12-170d-h & 12-170bb
- **Food Service:** State of Connecticut Public Health (DPH) Code and the City of Stamford Code of Ordinances Chapter 132
- **Housing Code:** The CT State General Statutes, Section 47a and Chapter 146 of the Stamford City Code of Ordinances
- **Microwave Antennas:** Chapter 160 of the Stamford City Code of Ordinances
- **Subsurface Sewage Disposal:** Through chapter 200 of the Stamford City Code of Ordinances and the Public Health Code of the State of Connecticut, §19-13-B100a; §19-13-B103; the Technical Standards, (pursuant to §19-13-B103)
- **Weights and Measures:** Stamford City Code of Ordinances Chapter 244

Mandated Services Provided

- **Refuse and Pesticide Trucks:** Stamford City Code of Ordinances chapters 137 and 227
- **Inspections, Salons:** *The Stamford City Code of Ordinances Chapter 141-5*
- **Inspections, Schools:** Connecticut State Public Health Code Section 19-13-B30
- **Day Care Centers:** General Statutes of State of Connecticut 19a-82
- **Water Quality/Drinking Water:** The State of CT Public Health Code Sections 19-13-B51a to 19-13-B51m
- **Well Water Testing of Private Wells:** Stamford City Code of Ordinances
- **Reportable Disease Information:** Required to submit information to the CT DPH and keep record of local reportable disease information sent to Stamford.
- **Lead Prevention:** Stamford City Code Chapter 146-27.1
- **Massage Establishment Inspections:** Stamford City Code chapter 159 and General Statutes of the State of Connecticut
- **Complaint Investigations:** State Statutes, Connecticut Public Health Code or the City Code of Ordinances (various)

Mandated Services Provided

- **Swimming Pools:** General Statutes of the State of Connecticut
- **Beaches & Shellfish Beds:** Connecticut Public Health Code
- **Mosquito and Vector Control:** Connecticut Public Health Code, General Statutes of the State of Connecticut and the Stamford Code of Ordinances.
- **Tuberculosis (TB):** State of CT Public Health Code 19A-36-A1 thru A24 and CT Statues Chapter 368G section: 19A-250 thru 19A-265.
- **Sexually Transmitted Disease (STD):** CT General Statutes - By contract with CT Dept. of Public Health required to interrupt, prevent transmission, and treat and Sexually Transmitted Diseases
- **Immunization program:** CT General Statutes - By contract with CT Dept. of Public Health required to conduct an immunization program to increase immunization levels among children.
- **School Nursing Services:** CT General Statutes requires school nursing services to provide; maintain cumulative health records; collect, review and assess the mandated health physicals and vaccine records for schools. Perform mandated screenings, referrals and follow-up.

2015-16 Highlights

Administration

DHSS provided more than 167,000 service contacts to the community for FY 2014-15

Highlights:

- Expanded Bi-lingual outreach efforts to neighborhood organizations, public elementary schools, and daycare providers
- Partner with Vita's Stamford Community Collaborative to advance health improvement initiatives in West Side
- Working with CT DPH to host Regional Full-Scale Mass Dispensing Exercise at Stamford High School in April 2016 with participation across City departments including Police, Fire, EMS, Operations, and BOE. Regional partners include Medical Reserve Corps and local health departments
- No Smoking in Parks policy

Goals:

- Work with all Divisions to achieve goals and objectives (Increase in-house water testing, achieve compliance for vaccines & physicals, Increase food service inspections, Create educational videos)
- Assess all outreach programs to better utilize department resources for efficiencies.

Challenges:

- Meeting needs of a developing city with present staffing levels
- Limited funding for professional development & training
- Providing services to a culturally diverse population within our city
- Re-evaluate mobile outreach services to be delivered to the community
- Expand collaboration with local agencies and organizations

2015-16 Highlights

Environmental Health Inspections

Inspects and monitors food safety, housing conditions, and scale accuracy!

Services Provided:

- Federal, State, and local mandates enforced through observation, plan review, sampling and monitoring of restaurant/food establishments, beach and water quality, housing, septic systems, pools, daycare/nursery facilities, and salons. Investigates food borne illnesses and complaints, conducts comprehensive lead inspections, administers weights & measures program and conducts a food safety course.

Highlights:

- Developed a Cosmetology Training Program offered upon request or with two consecutive failed inspections
- Implemented retail inspection initiative to increase inspection volume
- Received grant for pool inspection program to increase water safety awareness through education and training

Goals:

- Increase food service inspections by 10% from FY 15/16 versus FY 16/17

Challenges:

- Reporting of environmental and housing concerns because of cultural and linguistic barriers
- Create a split shift to capture inspections required during evening hours.

2015-16 Highlights

Public Health Nursing & Dental Hygiene

School Nurses provide services to 77 schools, nurseries & daycares.

Services Provided:

- Community Clinical Nursing Services (*Well Child, STD, TB, Travelers Clinics and Monitor Infectious Disease*), information and counseling, childhood/adult immunizations, monitors infectious disease, performs investigations and disease testing. Provides school nursing and dental hygiene services in Stamford schools.

Highlights:

- Increased volume of well child clinic visits by providing additional hours during July-September to meet demand for vaccines and physicals before start of new school year
- Expanded School Nurse Assistant Program (SNAP) electronic medical record data collection to include dental program
- Relocated nursing clinics to Henry Street to improve service delivery & reduce cost
- Changed flu vaccine program to increase BOE vaccination rates

Goals:

- 100% of student medical information entered into SNAP by November 2016 to achieve compliance for vaccines & physicals in Stamford Public Schools

Challenges:

- Coordinating with community organizations to meet public health needs
- Dealing with the needs of students with complex psycho-social & skilled nursing needs

2015-16 Highlights

Social Services

Social Services can grant health insurance to a pregnant women on the same day!

Services Provided

- Referrals and information for food, housing, temporary shelter, and financial assistance. Other services include eviction storage and relocation, Renter's Rebate program, healthcare insurance enrollment, and senior outreach programs. Subsidize Stamford Senior Transportation Services for the elderly and disabled.

Highlights

- Improved the process for eviction moving and storage to reduce costs
- Proactive in obtaining a grant to hire a Senior Health Nurse to work in collaboration with the Senior Outreach Coordinator to better meet needs of elderly residents
- Strengthened the partnerships with community agencies and organizations to streamline the referral process for the Senior Program

Goals

- Continued staff cross training and creating a set of social service educational videos to be available to the public for social service awareness

Challenges

- Education of the community to avoid public confusion over which services are provided by the State versus the City
- Lack of affordable housing stock for relocated families and seniors

2015-16 Highlights

Laboratory

The Laboratory also provides clinical services!

Services Provided:

- Drinking water quality testing, tick/insect identification, bedbug identification, rabies testing, diagnostic testing for sexually transmitted diseases (STDs), hemoglobin determination, lead screening, beach and pool testing

Highlights:

- Increased number of private well samples to test for minerals, metals, and potability (in-house)
- Implemented 2015 Well Ordinance requiring newly drilled wells be tested for pesticides and Uranium

Goals:

- Increase volume of in-house water testing by 10% and expand revenue via outreach initiatives to residents and realtors in Stamford and surrounding communities.
- Provides for in-house testing for Lead in drinking water in all public schools and municipal buildings

Challenges:

- Increasing Public awareness for testing private wells for pesticides, Arsenic, & Uranium.



2015-16 Highlights Grant Funded Programs

Woman Infant and Children (WIC)

Services Provided:

- **Federally funded supplemental nutrition program** available to low-income pregnant and postpartum women and infants and children to age five in Stamford and adjoining municipalities. Provides nutrition education and counseling, breastfeeding promotion and support, supplemental nutritious foods, supplemental infant formula and referrals to community resources to enrolled clients

****Goals and Objectives as per the Grant Funding Requirements**

HIV Program

Services Provided:

- **Free confidential HIV testing, counseling and referrals.** Services include outreach, education, and presentations to teens and adults.

****Goals and Objectives as per the Grant Funding Requirements**



Performance Measures

Division	Performance Data	FY 12-13	FY 13-14	FY 14-15	Performance Measures
Environmental Inspections	Food Service Establishments Inspected	1468	1556	1694	Fee increased in Oct 2015 for a 5 year phase-in for food services establishments. Proposed increase for FY 16/17 \$13,641
	Annual Inspections	1053	1102	1205	
	Complaints Investigated	842	1131	903	
	Septic Permits Issued	428	461	451	
	Housing Violation Notices Issued	491	309	287	
	Certificate of Apartment Occupancy Inspected	704	651	900	Fee increased in Oct 2015. Proposed revenue is based on the number of tenants moving out or into apartments.
	Hearings with owners of beauty salon or food establishment that failed 2 consecutive inspections	7	41	33	
	Food Safety Training (QFO and volunteer training)		149	347	QFO is a new revenue program as of FY 14/15.



Performance Measures

Division	Performance Data	FY 12-13	FY 13-14	FY 14-15	Performance Measures
Nursing & Dental Hygiene	Special skilled nursing interventions	11,163	11,251	10,857	Nursing services for students with severe medical conditions (catheterization, colostomy care, suctioning, G-tube feeding, oxygen, diabetic care)
	Medications given to students in schools	16,588	20,591	16,064	State law requires documentation of all medication given to students in school
	School Injury	45,417	49,395	32,899	Documentation of students visit to school nurse
	Sick visits reported to School Nurse	11,049	70,283	60,672	Documentation of student visit to school nurse
	Well child clinics Vaccines given	1,525	1,519	1,734	Vaccines given to under/non-insured children
	Dental screening provided	8,251	8,373	8,427	
	Flu vaccines given	1,249	1,068	1,078	Community vaccine program
	Breathe of Fresh Air Program – new client visits	53	59	11	
	Communicable Diseases		10	19	
	STD Clinic –initial visits	661	634	635	
	Travelers' Clinic – clients served	411	410	317	



Performance Measures

Division	Performance Data	FY 12-13	FY 13-14	FY 14-15	Performance Measures
Social Services	Health Insurance enrollment assistance	936	1500	1125	
	Presumptive eligibility			247	
	Evictions	127	172	169	
	Relocations	43	33	53	
	Renters Rebate applicants	1239	1282	1626	
	Senior Transportation	1011	918		
	ADA Transportation	8318	7913		
Laboratory	Well water ordinance samples	750	728	348	New ordinance program 2012. Based on residents participation a target collection (750), revenue of \$9,375. Decrease in collection in FY 14/15 due to lack of participation
	Water samples (private well and public water supply)	369	437	681	
	Ticks submitted for Lyme testing	244	244	226	
	Bedbug identification submissions	96	96	52	
	Rabies testing submission	15	15	16	
	STD test, for STD clinics	1100	705	788	

Performance Measures



Division	Performance Data	FY 12-13	FY 13-14	FY 14-15	Performance Measures
WIC	Stamford site participants	3250	3323	3372	
HIV	HIV test given	689	803	614	
	Confirmed positives			4	
	Staff outreach contacts	3763	8752	9137	
	Individuals getting HIV prevention services	4728	9836	10059	

Summary of Operating Budget

Mayor's Proposed Operating and Special Revenue Funds Budget

Fiscal Year 2016-17

Page 228

Description	FY 14/15 Actual	FY 15/16			Department Request	FY 16/17				FY 17/18 Estimate	FY 18/19 Estimate
		Adopted Budget	Revised Budget	Projected Exp & Enc		Mayor's Proposed	% of Total	\$ Var Projected	% Var Projected		
Expenditures											
Dir of Health (3810)	626,329	624,822	624,822	574,149	552,648	523,348	11.56%	-50,801	-8.8%	540,211	558,129
Laboratory (3811)	667,586	734,638	734,638	728,503	659,633	649,833	14.36%	-78,670	-10.8%	667,974	687,127
PS Health (3820)	2,681,453	2,919,716	2,919,716	2,912,493	0	0	0.00%	-2,912,493	-100.0%	0	0
Private & Parochial Health (3821)	1,397,100	1,363,535	1,363,535	1,367,672	0	0	0.00%	-1,367,672	-100.0%	0	0
Comm Nursing (3822)	892,735	918,071	918,071	918,675	867,500	867,500	19.17%	-51,175	-5.6%	898,912	932,457
Inspection Svcs (3830)	1,776,806	1,841,505	1,841,505	1,798,767	1,855,456	1,851,336	40.91%	52,569	2.9%	1,912,869	1,978,385
Social Svcs (3910)	511,917	665,815	715,815	710,896	647,107	633,882	14.01%	-77,014	-10.8%	650,422	667,791
Welfare Division (3920)	164,096	0	0	0	0	0	0.00%	0	0.0%	0	0
Total Expenditures	8,718,022	9,068,102	9,118,102	9,011,155	4,582,344	4,525,899	100.00%	-4,485,256	-49.8%	4,670,388	4,823,889
Revenue											
Laboratory (3811)	44,500	79,000	79,000	79,000	79,000	79,000	4.81%	0	0.0%	79,000	79,000
PS Health (3820)	22,662	40,000	40,000	25,000	30,000	30,000	1.83%	5,000	20.0%	30,000	30,000
Comm Nursing (3822)	42,684	34,500	34,500	34,500	40,000	40,000	2.44%	5,500	15.9%	40,000	40,000
Inspection Svcs (3830)	1,322,479	1,475,000	1,475,000	1,402,550	1,467,250	1,467,250	89.40%	64,700	4.6%	1,467,250	1,467,250
Social Svcs (3910)	31,903	25,000	25,000	25,000	25,000	25,000	1.52%	0	0.0%	25,000	25,000
Total Revenue	1,464,229	1,653,500	1,653,500	1,566,050	1,641,250	1,641,250	100.00%	75,200	4.8%	1,641,250	1,641,250
Net Operating Cost	7,253,793	7,414,602	7,464,602	7,445,105	2,941,094	2,884,649	100.00%	-4,560,456	-61.3%	3,029,138	3,182,639